

udel.edu/horn

OVERVIEW

EN•TRE•PRE•NEUR•SHIP:

*pursuing the creation,
delivery and capture of
value from new ideas*

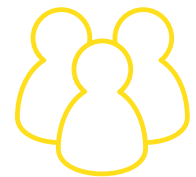


ACADEMIC PROGRAMS

Horn Entrepreneurship's dynamic, evidence-based curriculum emphasizes learning by doing in real world contexts to prepare students to adapt, thrive and lead in entrepreneurial roles with established companies, social ventures and startups. All UD students are welcomed.

STUDENT EXPERIENCE

Horn Entrepreneurship's Enrichment programs elevate the college experience by welcoming students into a like-minded community and supporting their acquisition of valuable skills, experiences and connections outside of the classroom.



VENTURE DEVELOPMENT

Horn Entrepreneurship's Venture Support and Commercialization programs provide a continuum of guidance and valuable resources to members of the UD community as they pursue new ideas for a better world, explore their professional interests and activate their passions.

TESTIMONIALS

"I have been empowered by Horn from the very beginning. From professors to mentors to resources, Horn has been the most rewarding, challenging, and invaluable experience of my academic career."

- Rachel Weinberger, '16

"Horn Entrepreneurship at the University of Delaware has been the biggest shaper of not only my college experience but of my life as a whole. Through the help of Horn, I have been able to learn the fundamentals and skills needed to be a successful entrepreneur, and have since continued to use these skills in my everyday life and current startups."

- Ariel Ramirez, '18

"I love being a part of the Horn Entrepreneurship family. Everyone is so supportive and motivating when it comes to my personal and academic growth. Horn is always offering new and exciting ways to get more involved with entrepreneurship. I really believe the opportunities are endless!"

- Kelly Landis, '21

"UD has been a transformative experience both professionally & personally."

- George Eric Munyua, '19

Visit udel.edu/horn to learn more.

